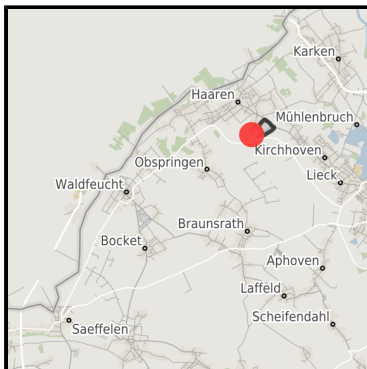
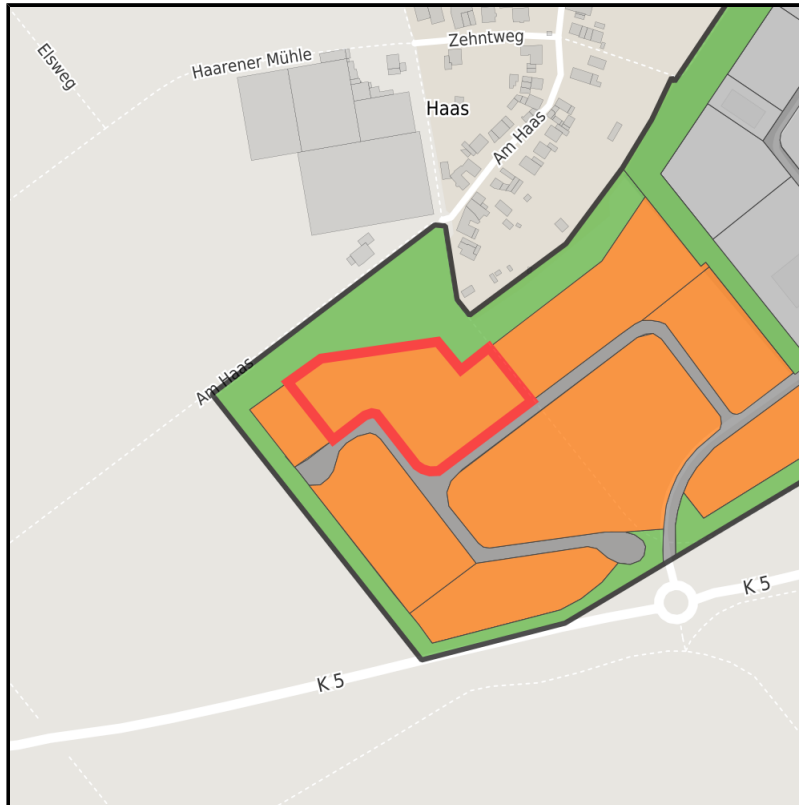


**Gewerbegebiet Haaren****Ort: Waldfeucht**[www.germansite.de](http://www.germansite.de)

Regional overview



Municipal overview



Detail view

**Parcel**

Area size	10,175 m <sup>2</sup>
Availability	Available area within short term (< 2 years)
Divisible	No
24h operation	No

## Details on commercial zone

The mix makes the difference ....Industries in the Haaren industrial estate

Numerous companies are located in the approx. 146,000 m<sup>2</sup> Waldfeucht-Haaren industrial and commercial area, including a gas station, a construction company, an ice production company, a container service, a painting and decorating company, a bus company, a heating and plumbing company and a company for the production of windows, doors and conservatories.

Main industry sector	ice cream factory
Main companies	Rosen Eiskrem GmbH
Industrial tax multiplier	421.00 %
Price	from 40.00 € / m <sup>2</sup>
Area type	GE

## Links

<https://wfg-hs.blis-online.eu>

## Transport infrastructure

Freeway	A2 (NL)	10 km
Airport	Düsseldorf	25 km
Port	Born (NL)	12 km
Rail freight	Geilenkirchen	17 km

## Information about Waldfeucht

The Waldfeucht-Bocket commercial zone covers 145,000 m<sup>2</sup> and is home to many companies, including retail firms, a specialist model-making store, a construction and wrought ironwork business, a manufacturing company for PVC windows, doors, and roller blinds, a joinery, a roofing business, a construction company, a taxi dispatch center, a car dealership, a saddlery, a plastering and stucco business, an airbrush firm, and a distribution company for construction steel and building components. Recent additions were a beverage & drug store, a civil engineering company, and a waste disposal business.

## EXPOSÉ

**Gewerbegebiet Haaren**

**Ort: Waldfeucht**

### **Contact person**

Heinz-Josef Schrammen

Gemeinde Waldfeucht

Germany

+49 (0)2455/399-10

+49 (0)2455/40777-11

[hj.schrammen@waldfeucht.de](mailto:hj.schrammen@waldfeucht.de)

<http://www.waldfeucht.de>