

EXPOSÉ

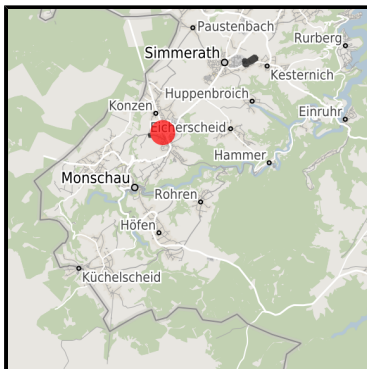
Gewerbegebiet Imgenbroich - Erweiterung Nord-West

Ort: Monschau

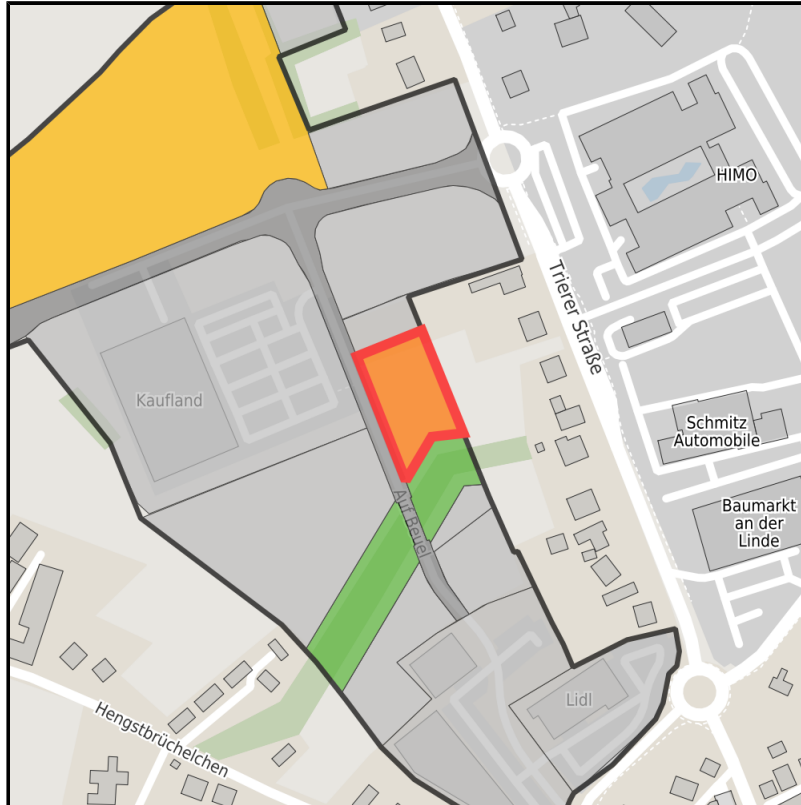
www.germansite.de



Regional overview



Municipal overview



Detail view

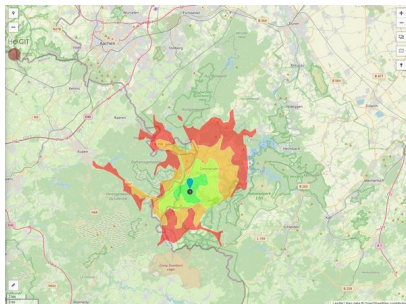
Parcel

Area size	3,250 m ²
Availability	Available area within short term (< 2 years)
Area designation	Commercial zone
Divisible	Yes
24h operation	No

Gewerbegebiet Imgenbroich - Erweiterung Nord-West**Ort: Monschau**www.germansite.de**Details on commercial zone**

The new 14-hectare industrial estate is located in the Monschau district of Imgenbroich, which is increasingly developing into a shopping address in the Eifel. This strong business location can be easily reached via the B258/B399, the A44 (exit: Aachen-Lichtenbusch), A1 (exit: Euskirchen-Wisskirchen) and the Eupen/Belgium freeway junction.

Industrial tax multiplier	407.00 %
Area type	GE

Links<https://www.gistra.de>

Erreichbarkeit in 20 Minuten: 35.000
Einwohner

Transport infrastructure

Freeway	A3	23.8 km
Airport	Liege	67 km
Airport	Maastricht-Aachen	74.1 km
Port	Liège (B)	54.4 km
Port	Binnenhavenweg Stein (NL)	69.8 km

Gewerbegebiet Imgenbroich - Erweiterung Nord-West

Ort: Monschau

www.germansite.de

Information about Monschau

The municipality of Monschau can look back on an eventful economic history. In the 18th century its textile industry enjoyed international renown. Today, Monschau ranks as one of the top tourist attractions in the Eifel region (it acquired "air spa" status in 1996). The local economy has grown strongly in recent years. The NRW state planning authorities have designated Monschau as a "regional center" serving the surrounding districts.



EXPOSÉ

Gewerbegebiet Imgenbroich - Erweiterung Nord-West

Ort: Monschau

GERMAN.SITE
SITES AND REAL ESTATE

www.germansite.de

Contact person

Björn Schmitz

Stadt Monschau

Germany

+49 (0)2472/ 81-304

+49 (0)2472/ 81-262

b.schmitz@stadt.monschau.de

<http://www.monschau.de>

In cooperation with:



Aachener Gesellschaft für Technologietransfer und Innovation AGIT mbH

Frank Leisten

+49(0)241 475773-50

f.leisten@agit.de

<http://www.agit.de>