

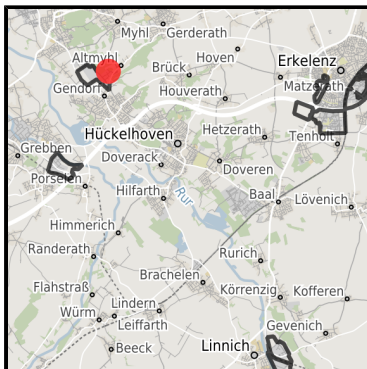
Industrial Park "Rurtal" Hückelhoven-Wassenberg

Ort: Hückelhoven

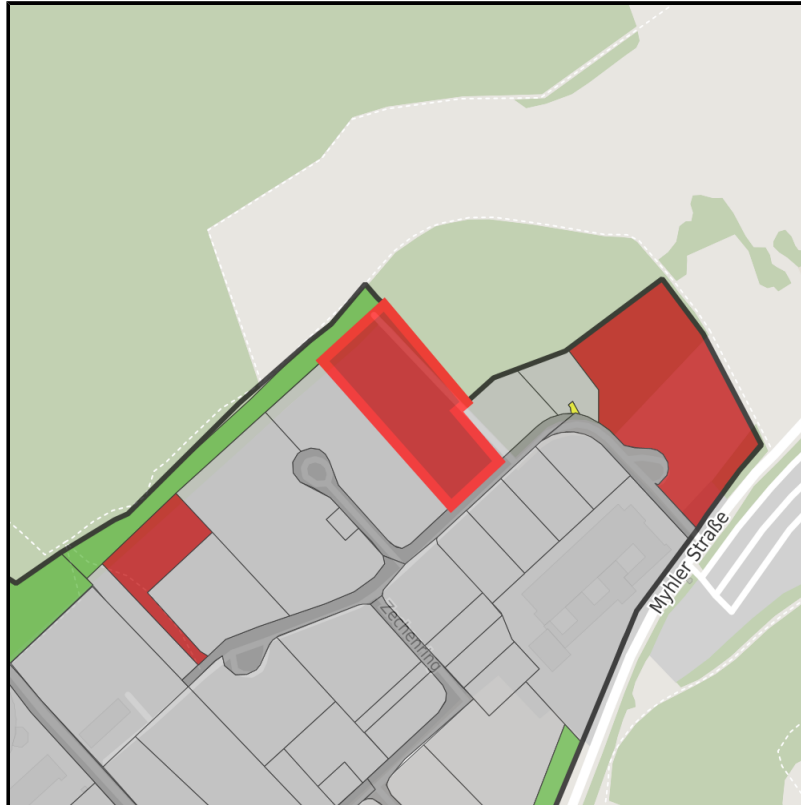
www.germansite.de



Regional overview



Municipal overview



Detail view

Parcel

Area size	7,316 m ²
Availability	Immediately available area
Divisible	No
24h operation	No

EXPOSÉ

Industrial Park "Rurtal" Hückelhoven-Wassenberg

Ort: Hückelhoven

Details on commercial zone

Industrial site Rurtal - your essential advance!

Situated to the north-west of Ratheim on the Hückelhoven/Wassenberg town boundary, this intermunicipal location provides all the important criteria required for success. See for yourself!

Industrial tax multiplier

417.00 %

Area type

GI / GE

Links

<https://wfg-hs.blis-online.eu>



Industriepark Rurtal



Industriepark Rurtal



Industriepark Rurtal

Industrial Park "Rurtal" Hückelhoven-Wassenberg**Ort: Hückelhoven**www.germansite.de**Transport infrastructure**

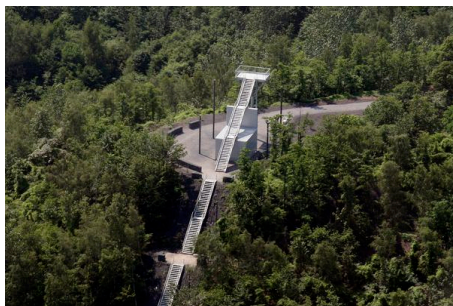
Freeway	A 46	2.7 km
Freeway	A 52	19.2 km
Airport	Maastrich-Aachen	56.7 km
Airport	Düsseldorf	67.8 km
Port	Holtum-Noordweg Born (NL)	39.9 km
Port	Binnenhavenweg Stein (NL)	50.1 km

Information about Hückelhoven

Hückelhoven is surrounded by Maastricht, Aachen, Mönchengladbach, Düsseldorf and Cologne.

More than 100 ha industrial space has been developed after the black coal mining "Sophia Jacoba" was closed down in the year 1997.

Within a radius of 300 km there is great market potential due to the efficient infrastructure. Various small and middle sized companies as well as important international enterprises already appreciate the advantages of the location for years. The Entrepreneur and service centre in Hückelhoven (GSZH) provides excellent conditions for innovative companies.



Millicher Halde

EXPOSÉ

Industrial Park "Rurtal" Hückelhoven-Wassenberg

Ort: Hückelhoven

GERMAN.SITE
SITES AND REAL ESTATE

www.germansite.de

Contact person

Marco Tümmeler

Stadt Hückelhoven

Rathausplatz 1

41836 Hückelhoven

Germany

+49 (0)2433/82-124

+49 (0)2433/82-264

marco.tuemmler@hueckelhoven.de

<http://www.hueckelhoven.de>